



The elegant way of expressing your own style.



THE
DECENTA
RANGE



ENTRANCE DOORS WITH DOUBLE-SIDED ATTACHMENT PANELS

THE DECENTA RANGE

In homes just as in personal relationships, nothing beats an excellent first impression. A high-quality door sets a welcoming ambience and raises the perceived value of your entire home as well as providing added security.

Outstanding advanced design is no longer contradictory to strict safety requirements. The double-sided attachment panel fulfils both demands superbly.

The exterior as well as the interior views of the door leaf display entirely flush surfaces. An approach to style and elegance that certainly lives up to aesthetes' high expectations.

"THE CLEAN AESTHETIC LINES COMBINED WITH THE FLUSH SURFACES OF THE DOUBLE-SIDED ATTACHMENT PANEL IS THE RESULT OF CONSISTENT DESIGN."
Nina Wolf, Designer

The highly insulating core is made of rigid PU foam and cellulose. The glass pane insert is triple glazed. The design components used ensure optimum thermal insulation and with this promote energy savings. 3mm aluminium sheeting on the exterior surface and 2mm on the interior surface provide superior resistance to forced entries and give you a secure feeling in your own home.

adeco aluminium attachment panels – a finely tuned combination of aesthetic charm, outstanding design with selected high-grade materials, state-of-the-art technology and precise craftsmanship.

INDEX

| | | | |
|-----------------|---------|------------------------------|---------|
| Alliso | 10 – 11 | Metris no glass insert | 6 – 7 |
| Allon | 28 – 29 | Numira | 16 – 17 |
| Amsterdam | 48 – 49 | Paris | 54 – 55 |
| Arola | 20 – 21 | Penda | 18 – 19 |
| Bruxelles | 50 – 53 | Talio | 32 – 35 |
| Caverro | 12 – 13 | Timano | 24 – 25 |
| Consis. | 22 – 23 | Vilmo | 36 – 37 |
| Linora | 26 – 27 | | |
| Liseo W2i | 40 – 41 | The attachment panel. . . | 58 – 59 |
| Liseo W3i | 42 – 43 | | |
| Liseo W4i | 44 – 45 | The surfaces | |
| London | 56 – 57 | FINEA | 60 – 61 |
| Metris | 8 – 9 | SILVEA | 62 – 63 |



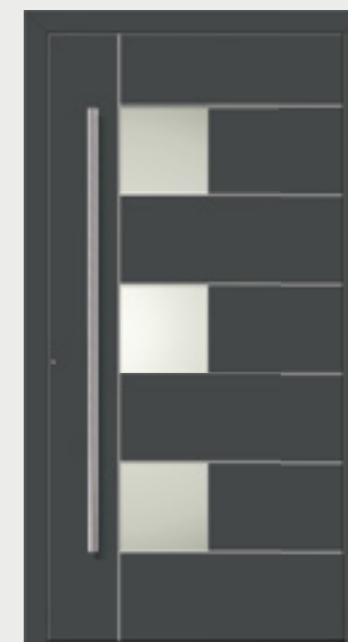


Metris LH version | Glazed

DESIGN: Sabine Bischof

Metris LH version | No glass insert

DESIGN: Sabine Bischof



Alliso LH version | 4 glazed inserts

DESIGN: Sabine Bischof

Caverro LH version | 3 glazed inserts

DESIGN: Sabine Bischof



Metris RH version | No glass insert
 Colour Finea 04
 With stainless steel inlays on the exterior surface
 ●● Part no. F83 B
 ●○ Part no. F83 A
 Supplied with design related handle HA 591
 Matt brushed stainless steel

With glazed side panel
Metris | Model pane
 Sand blasted Metris 1
 On clear basic glass
 Glazing matt finish – borders clear glass
 Part no. GS 017

Metris LH version | No glass insert
 Colour Silvea 04
 With stainless steel inlays on the exterior surface
 ●● Part no. F82 B
 ●○ Part no. F82 A
 Supplied with design related handle HA 591
 Matt brushed stainless steel

With glazed side panel
Metris | Model pane
 Sand blasted Metris 3
 On clear basic glass
 Glazing matt finish – lines 5 mm clear glass
 Part no. GS 025

Metris



AMBIENCE*
Metris RH version | Glazed
Clear glass, flat
Shown as
Double-sided attachment panel

Metris RH version | Glazed
With stainless steel inlays on the exterior surface
Clear glass, flat
●● Part no. F91 B
●○ Part no. F91 A
Supplied with design related handle HA 591
Matt brushed stainless steel

Alliso



AMBIENCE*
Alliso LH version | 4 glazed inserts
Clear glass, flat
Shown as
Double-sided attachment panel

Alliso LH version | 4 glazed inserts
Colour Finea 04
With stainless steel inlays on the exterior surface
Clear glass, flat
● Part no. F99 B
● Part no. F99 A
Supplied with design related handle HA 591
Matt brushed stainless steel

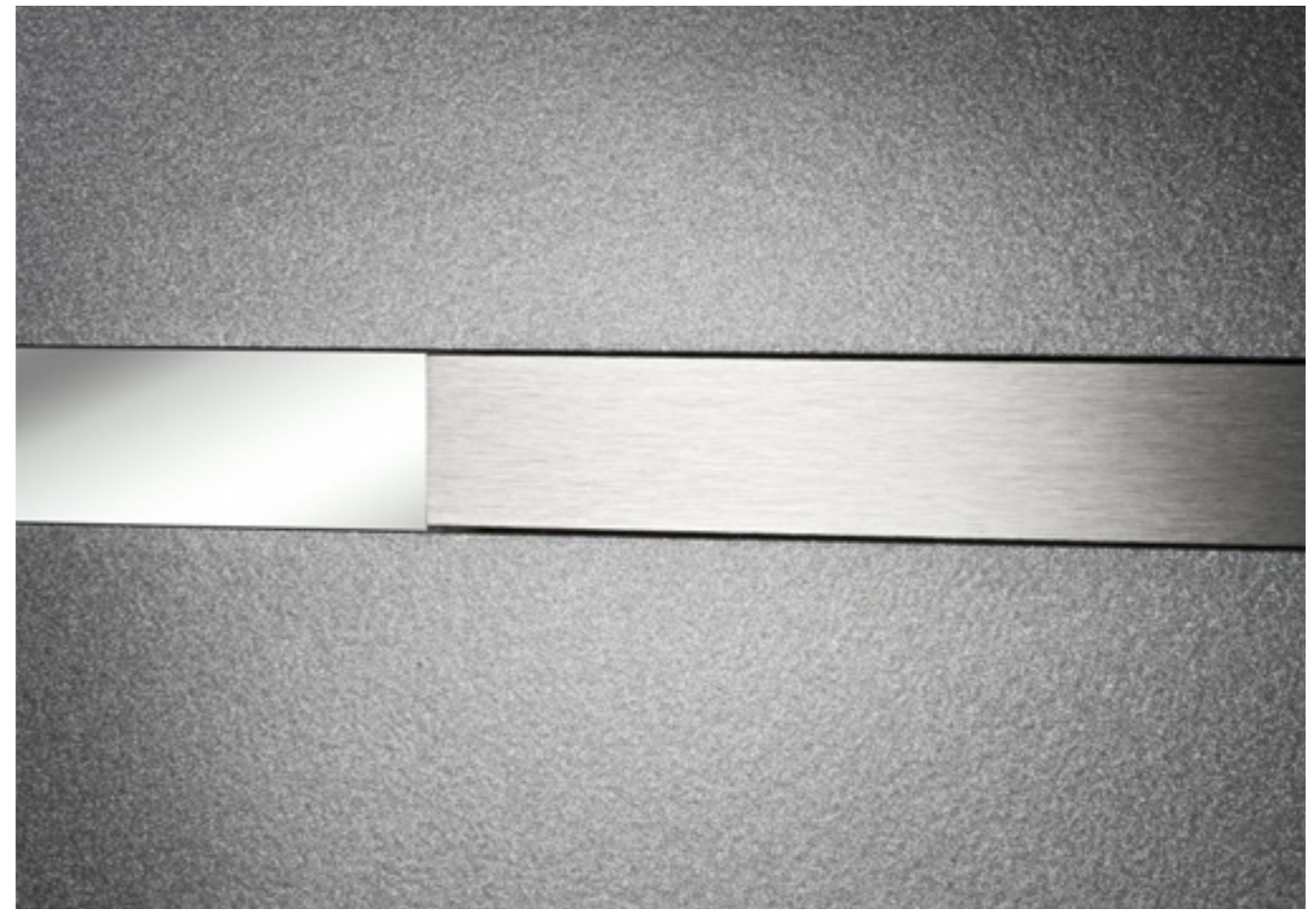
Caverro



AMBIENCE*
Caverro LH version | 3 glazed inserts
Clear glass, flat
Shown as
Double-sided attachment panel

Caverro LH version | 3 glazed inserts
Colour Silvea 03
With stainless steel inlays on the exterior surface
Clear glass, flat
● Part no. F86 B
○ Part no. F86 A
Supplied with design related handle HA 591
Matt brushed stainless steel

CEN TEA



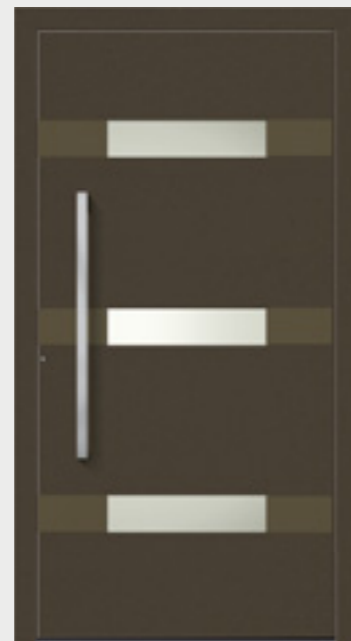
Numira LH version | Glazed
DESIGN: rahe + rahe

Penda | Glazed
DESIGN: rahe + rahe

Arola | 3 glazed inserts
DESIGN: Sabine Bischof



Consis | Glazed
DESIGN: rahe + rahe



Timano | 3 glazed inserts
DESIGN: Sabine Bischof



Linora | 5 glazed inserts
DESIGN: gestalttransfer



Allon | Glazed
DESIGN: rahe + rahe

Numira



AMBIENCE*
Numira LH version | Glazed
Sand blasted Numira 1
On clear basic glass
(figures + large zone clear glass –
background matt finish)
Shown as
Double-sided attachment panel

Numira LH version | Glazed
Colour Finea 03
Silver anodised aluminium feature
on the exterior surface
Sand blasted Numira 1
On clear basic glass
(figures + large zone clear glass –
background matt finish)
● Part no. M05 B
○ Part no. M05 A
Supplied with design related handle HA 215
Matt brushed stainless steel
Combined with silver anodised aluminium

Penda



AMBIENCE*
Penda | Glazed
Clear glass, flat
Identical views on the outside / inside
Non-standard version
Available as an option

Left and right glazed side panels
Clear glass, flat

Penda | Glazed
Colour Silvea 04
With stainless steel feature
on the exterior surface
Clear glass, flat
●● Part no. K97 B
●○ Part no. K97 A
Supplied with design related handle HA 312
Matt brushed stainless steel

Left and right glazed side panels
Clear glass, flat

Arola



AMBIENCE*
Arola | 3 glazed inserts
Clear glass, flat
Shown as
Double-sided attachment panel

Arola | 3 glazed inserts
Colour Finea 04 / Finea 03
Clear glass, flat
● Part no. U03 B
● Part no. U03 A
Supplied with design related handle HA 284
Matt brushed stainless steel

Consis

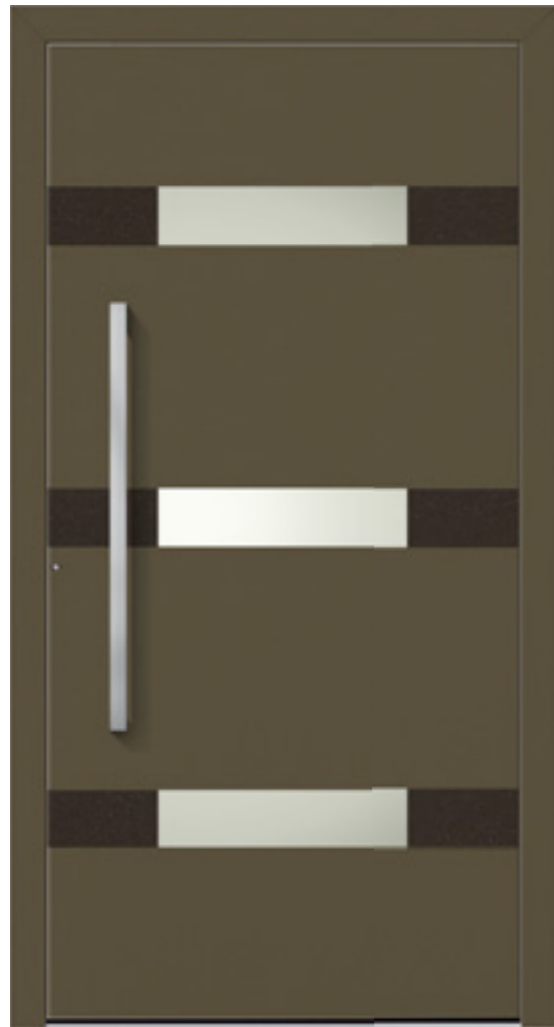


AMBIENCE*
Consis | Glazed
Sand blasted Consis 1
On clear basic glass, flat
Shown as
Double-sided attachment panel

Consis | Glazed
Colour Silvea 11
Sand blasted Consis 1
On clear basic glass, flat
● Part no. K25 B
○ Part no. K25 A
Supplied with design related handle HA 312
Matt brushed stainless steel



Timano



Timano | 3 glazed inserts
Colour Finea 14 / Finea 15
Clear glass, flat
● Part no. U12 B
● Part no. U12 A
Supplied with design related handle HA 286
Matt brushed stainless steel

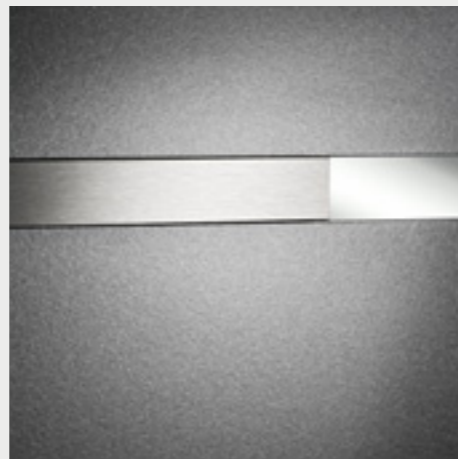
Timano | 3 glazed inserts
Colour Finea 03 / Finea 15
Clear glass, flat
● Part no. U12 B
● Part no. U12 A
Supplied with design related handle HA 286
Matt brushed stainless steel

Linora



Linora | 5 glazed inserts
Colour Silvea 04
With stainless steel feature
on the exterior surface
Clear glass, flat
●● Part no. K59 B
●○ Part no. K59 A
Supplied with design related handle HA 465
Matt brushed stainless steel

DETAIL
Linora | 5 glazed inserts
Colour Silvea 04
With stainless steel feature
on the exterior surface
Clear glass, flat



Linora | 5 glazed inserts
Colour Silvea 10
With stainless steel feature
on the exterior surface
Clear glass, flat
●● Part no. K59 B
●○ Part no. K59 A
Supplied with design related handle HA 465
Matt brushed stainless steel

Allon



Allon | Glazed
Colour Silvea 04
Satinato white, flat
●● Part no. 132 B
●○ Part no. 132 A
Supplied with design related handle HA 465
Matt brushed stainless steel

Allon | Glazed
Clear glass, flat
●● Part no. 132 B
●○ Part no. 132 A
Supplied with design related handle HA 465
Matt brushed stainless steel

Left and right glazed side panels
Clear glass, flat



Talio LH version | No glass insert, with left and right glazed side panels
DESIGN: Sabine Bischof

Talio LH version | No glass insert
DESIGN: Sabine Bischof



Vilmo | No glass insert, with glazed side panel
DESIGN: Sabine Bischof

Talio



Talio LH version | No glass insert
Colour Finea 04
● Part no. U02 B
● Part no. U02 A
Supplied with design related handle HA 297
Silver anodised aluminium

With glazed side panel
Clear glass, flat

Talio RH version | No glass insert
Colour Finea 13
● Part no. U11 B
● Part no. U11 A
Supplied with design related handle HA 465
Silver anodised aluminium

With glazed side panel
Clear glass, flat

Talio



AMBIENCE*
Talio RH version | No glass insert
Shown as
Double-sided attachment panel
Non-standard height

Talio RH version | No glass insert
Colour Coral red
●● Part no. U11 B
●○ Part no. U11 A
Supplied with design related handle HA 465
Silver anodised aluminium
Non-standard height

Vilmo

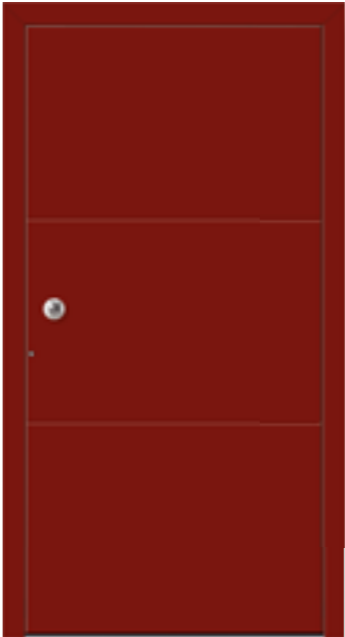


AMBIENCE*
Vilmo | No glass insert
 Shown as
 Double-sided attachment panel
 Non-standard height

Vilmo

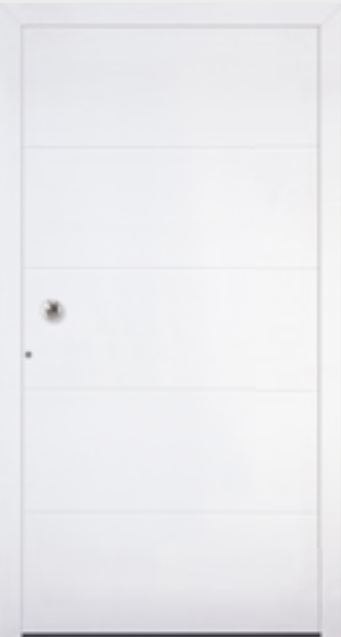


Vilmo | No glass insert
 ● Part no. U13 B
 ○ Part no. U13 A
 Supplied with design related
 handle HA 298
 Silver anodised aluminium
 Non-standard height



Liseo W2i | No glass insert
DESIGN: adeco

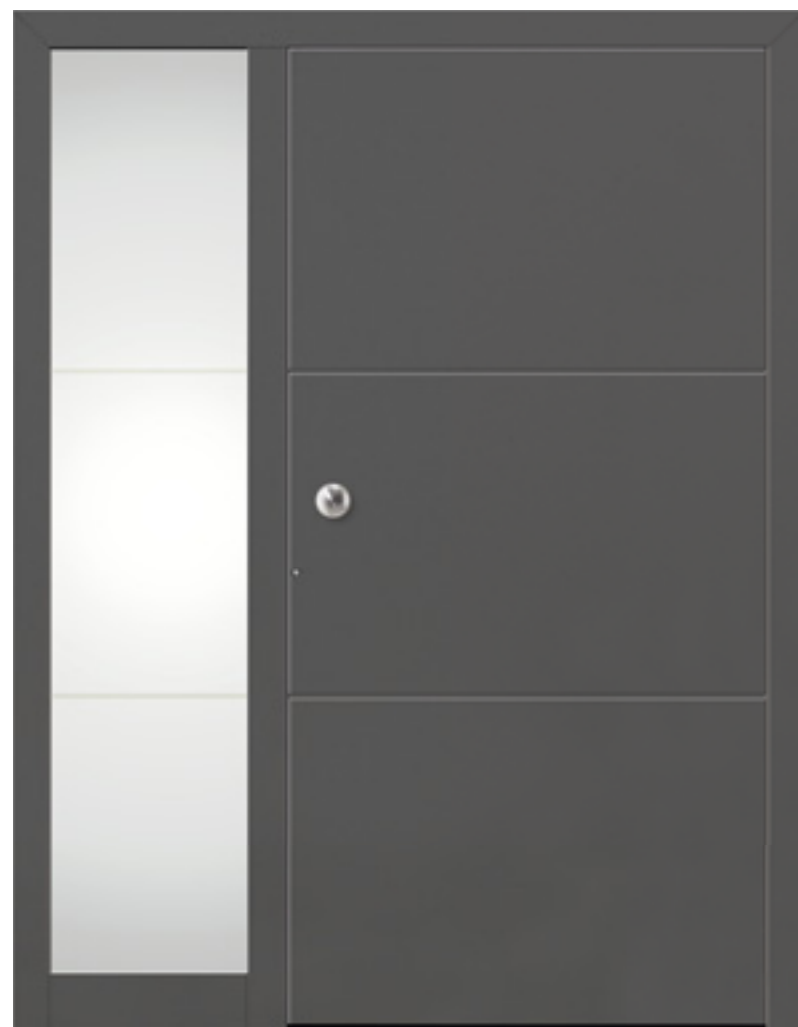
Liseo W3i | No glass insert, glazed side panel
DESIGN: adeco



Liseo W4i | No glass insert, glazed side panel
DESIGN: adeco

Liseo W4i | No glass insert
DESIGN: adeco

Liseo W2i



Liseo W2i | No glass insert

Colour Silvea 04

●● Part no. N01 B

●○ Part no. N01 A

Supplied with design related door knob HA 445

Matt brushed stainless steel

With glazed side panel

Liseo W2i | Model pane

Sand blasted Liseo W2i variant 2

On clear basic glass

Glazing matt finish with 2 clear lines

Part no. GS 312

Liseo W2i | No glass insert

Colour Light grey

●● Part no. N01 B

●○ Part no. N01 A

Supplied with design related door knob HA 445

Matt brushed stainless steel

With glazed side panel

Clear glass, flat

Liseo W3i



Liseo W3i | No glass insert
Colour Carmine red
● Part no. N22 B
○ Part no. N22 A
Supplied with design related door knob HA 445
Matt brushed stainless steel

With 2 glazed side panels
Liseo W3i | Model panes
Sand blasted Liseo W3i variant 2
On clear basic glass
Glazing matt finish with 3 clear lines
Part no. GS 314

Liseo W4i



Liseo W4i | No glass insert
Colour Light grey
● Part no. N20 B
● Part no. N20 A
Supplied with design related door knob HA 445
Matt brushed stainless steel

With glazed side panel
Liseo W4i | Model pane
Sand blasted Liseo W4i variant 2
On clear basic glass
Glazing matt finish with 4 clear lines
Part no. GS 316



Liseo W4i | No glass insert
Colour Finea 04
● Part no. N20 B
● Part no. N20 A
Supplied with design related door knob HA 445
Matt brushed stainless steel

With glazed side panel
Liseo W4i | Model pane
Sand blasted Liseo W4i variant 2
On clear basic glass
Glazing matt finish with 4 clear lines
Part no. GS 316



CLASSICA - design "Villa"



Amsterdam design "Villa" | Glazed at the top
DESIGN: Sabine Bischof

Bruxelles design "Villa" | No glass insert
DESIGN: Sabine Bischof



Paris design "Villa" | 3 glazed inserts
DESIGN: Sabine Bischof

London design "Villa" | 2 glazed inserts
DESIGN: Sabine Bischof

Amsterdam



Amsterdam design "Villa" | Glazed at the top
Colour Anthracite grey
Clear glass, flat
● Part no. N81 B
○ Part no. N81 A
Supplied with design related door knob HA 445
Matt brushed stainless steel

Bruxelles



Bruxelles design "Villa" | No glass insert

● Part no. U31 B

○ Part no. U31 A

Supplied with design related door knob HA 445

Matt brushed stainless steel

With 2 glazed side panels

Clear glass, flat

Bruxelles



Bruxelles design "Villa" | No glass insert
Colour Brown red
● Part no. U31 B
● Part no. U31 A
Supplied with design related door knob HA 445
Matt brushed stainless steel

AMBIENCE*
Bruxelles design "Villa" | No glass insert
Shown as double-sided attachment panel

With 2 glazed side panels
Clear glass, flat



Paris design "Villa" | 3 glazed inserts
 Colour Fir green
 Clear glass, flat
 ● Part no. N77 B
 ○ Part no. N77 A
 Supplied with design related door knob HA 445
 Matt brushed stainless steel

Paris design "Villa" | 3 glazed inserts
 Clear glass, flat
 ● Part no. N77 B
 ○ Part no. N77 A
 Supplied with design related door knob HA 445
 Matt brushed stainless steel



Paris design "Villa" | 3 glazed inserts
 Clear glass, flat
 ● Part no. N77 B
 ○ Part no. N77 A
 Supplied with design related door knob HA 445
 Matt brushed stainless steel

London

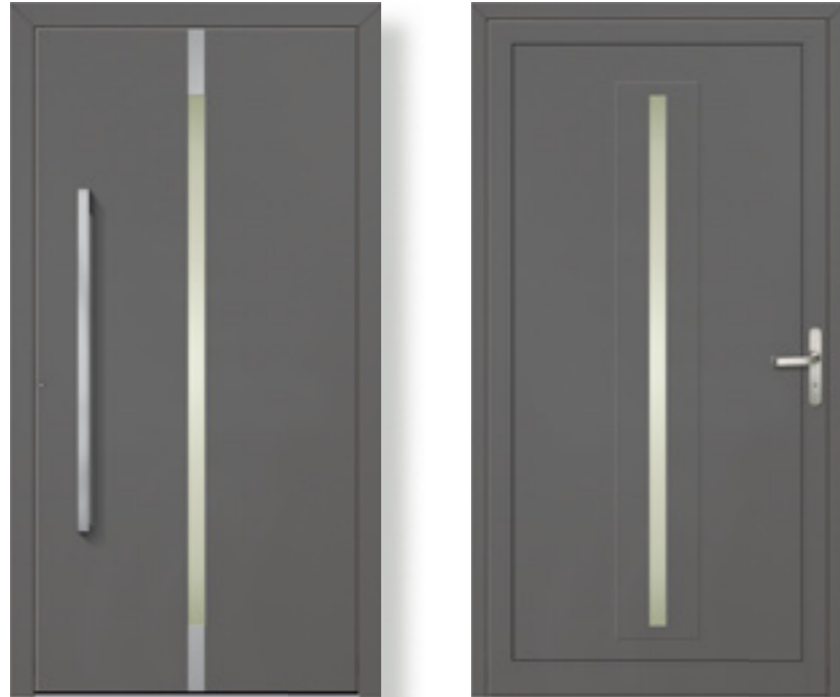


London design "Villa" | 2 glazed inserts
Clear glass, flat
●● Part no. U46 B
●○ Part no. U46 A
Supplied with design related door knob HA 445
Matt brushed stainless steel

London design "Villa" | 2 glazed inserts
Colour Anthracite grey
Clear glass, flat
●● Part no. U46 B
●○ Part no. U46 A
Supplied with design related door knob HA 445
Matt brushed stainless steel

THE ATTACHMENT PANEL

● The single-sided attachment panel (A) – First-class design and high functionality



exterior view

interior view*



Design / Functionality

Elegance on the outside due to the flush surfaces and the concealed door leaf sections, functionality on the inside with glass frames.

Care / Maintenance

As the frame is concealed on the outside and due to the selected high-grade surface materials, care and maintenance is very easy.

Insulation

- Highly insulating rigid foam core in combination with a 4 mm layer of cellulose
- Double insulation glazing, exterior and interior pane: single-pane safety glass with 2 low emissivity coatings and Argon gas fill if technically feasible

Security

- 3 mm aluminium sheeting on the outside
- 1.5 mm aluminium sheeting on the inside



●● The double-sided attachment panel (B)

Uncompromised design combined with premium quality



exterior view

interior view*
standard version

interior view*
identical views on the outside/inside,
non-standard version,
available as an extra option

Design / Functionality

Elegance and perfection on the outside as well as on the inside due to the flush surfaces and the concealed door leaf sections.

Care / Maintenance

As the frame is concealed between the two panels and due to the selected high-grade surface materials, care and maintenance is very easy.

Insulation

- Highly insulating rigid foam core in combination with a 4 mm layer of cellulose, thus achieving an insulation thickness of at least 65 mm
- Triple insulation glazing, exterior and interior pane: single-pane safety glass with 2 low emissivity coatings and Argon gas fill if technically feasible

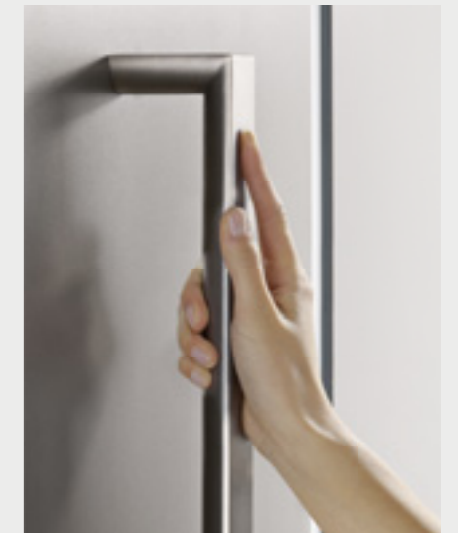
Security

- 3 mm aluminium sheeting on the outside
- 2 mm aluminium sheeting on the inside
- Triple insulation glazing, exterior and interior panes: 4 mm single-pane safety glass



THE HARMONY OF DOOR HANDLES

Less is definitely more, and often better, too. The shape and material of a door handle should harmonise with the style of the front door. This should always be taken into consideration before starting to develop a front door design. The design of the handles for the Decenta range has been created to complement the style of the panels and, by using the right materials, to enhance the contemporary feel they create.



EASIER OPERATION

Another advantage derives from the fact that the handles are mounted directly on the door panel: The ease of operation is improved because there is more space between door lock and door handle, making it easier to open or lock the front door. When creating our door handles, our designers attached great importance to these ergonomic aspects.

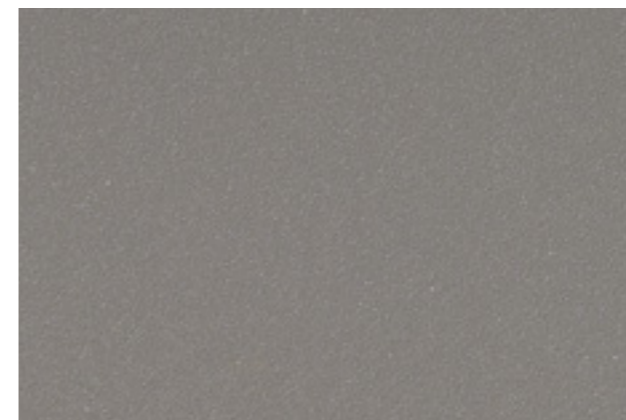


The design related handle

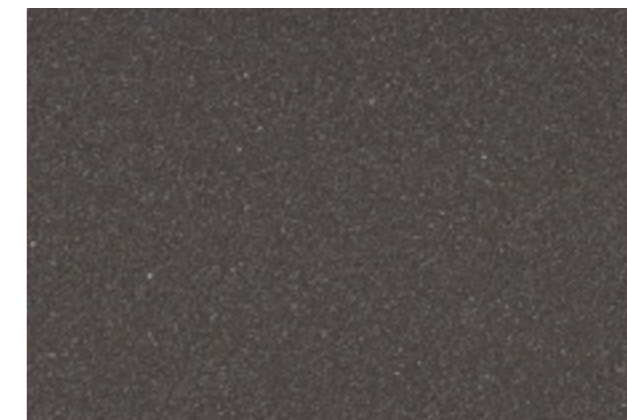
FINEA

DIVERSE SHADES AND EXTREMELY ROBUST SURFACES

The fine, smooth and harmonious structure of the surface is effected by a particularly high concentration of coloured pigments combined with a fine grain size of raw material. Embedded metal particles contribute to the precious glimmer and elegant appearance. The FINEA coatings are not only easy to clean but also extremely sturdy and robust due to their special material composition. As a result of their unbeatable surface strength, the FINEA colours fulfil strict requirements on scratch resistance and resistance to impact.



FINEA 03



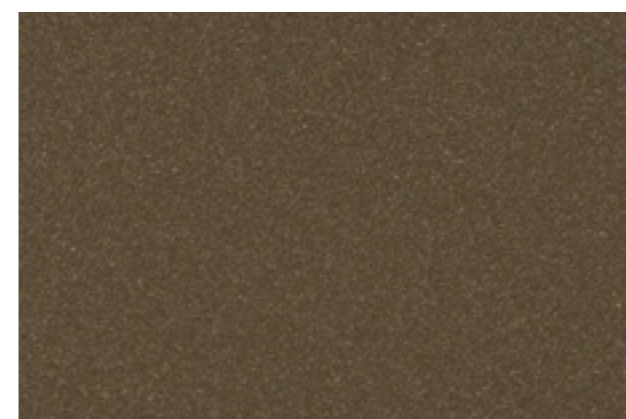
FINEA 04



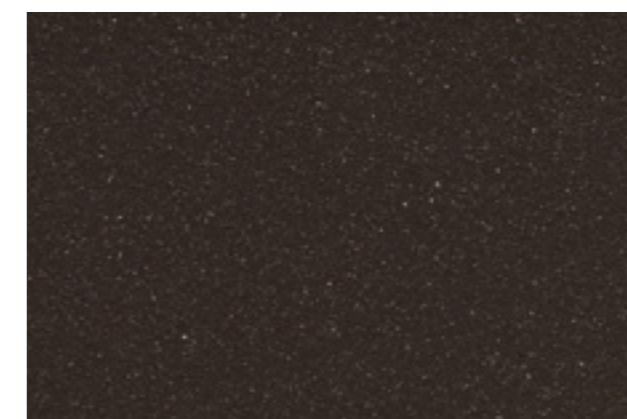
FINEA 13



FINEA 105



FINEA 14



FINEA 15

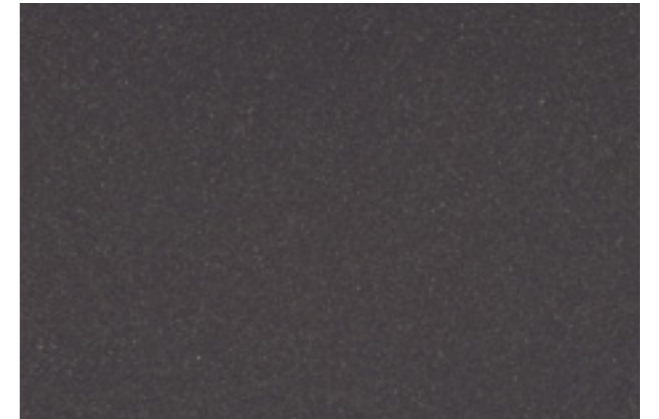
SILVEA

STRIKING EFFECTS THANKS TO METALLIC MICROPARTICLES

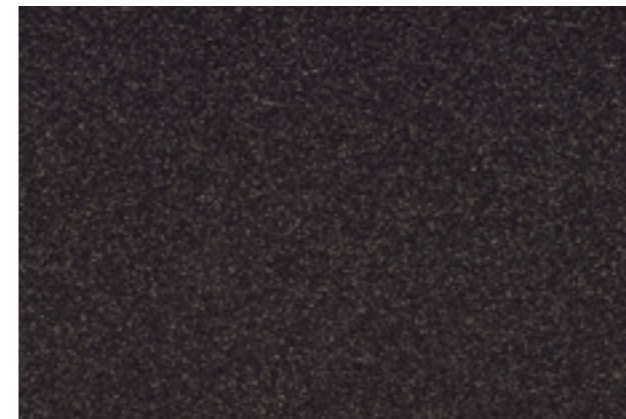
Apart from the colour pigments, metallic microparticles are spread evenly all over the surface. The grain size of the raw material has the effect that the surface finish looks flush, matt and yet bright and vital. Light is reflected by thousands of tiny shimmering dots. The SILVEA coated surface is durable and easy to clean.



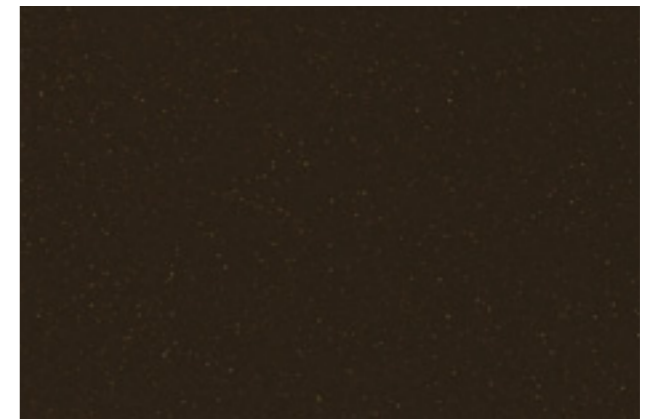
SILVEA 03



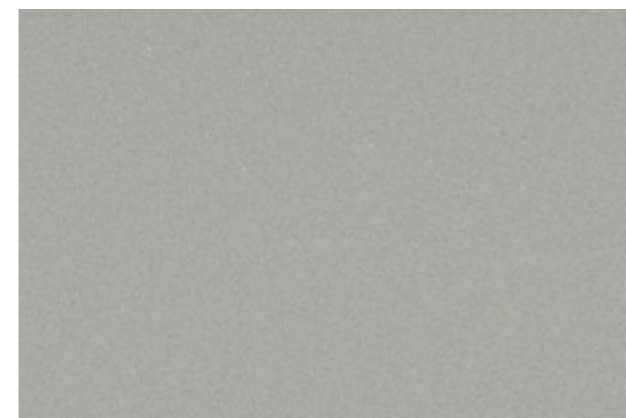
SILVEA 04



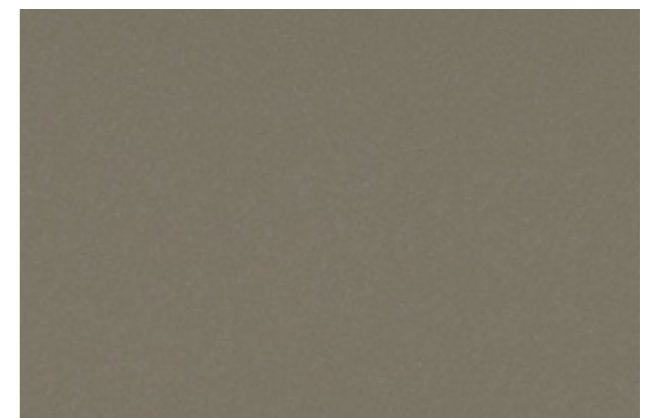
SILVEA 06



SILVEA 07



SILVEA 10



SILVEA 11



The elegant way of expressing your own style.



Your specialised dealer:

www.adeco.de

Due to reproduction and printing related reasons, the illustrations, colour photographs, stainless steel features and inlays, silver or titanium anodised aluminium features presented in this catalogue are not binding. The same applies to the selection of handles. We recommend the use of an original RAL resp. a Finea or Silvea colour chart for the exact determination of the colour shades. The effect of glasses and colours differs depending on the light transmittance, time of day, season and installation location. The exterior views of the single-sided (A) and the double-sided (B) attachment panels are identical. All the door panels shown in the photographs are attachment panels. Height and width of the door frames may vary depending on the positioning and type of profile used. The view may vary depending on the dimension of the door as well as on the type of door profile used. Door panels that are not shown in an installed but rather a stand-alone situation are pictured without door sills. Depending on the door manufacturer 3D hinges might vary. Please contact your specialist dealer with any queries so that he may competently advise you. Subject to change without notice.